

The AW-CTD382EX series have excellent explosion-proof performance. It is suitable for hazardous locations which include the explosive gas environment.

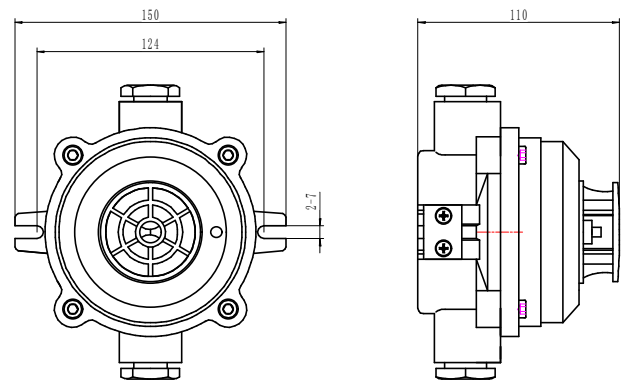
The AW-CTD382EX conventional rate of rise heat detector uses thermal components to detect the temperature in the environment. It can enable fire alarm when the temperature difference achieved the setting rate of rise temperature value.

This detector can be used with the conventional fire alarm panel.



Features

- ✓ LED indicator
- ✓ Excellent explosion-proof performance
- ✓ Meets all requirements of latest EN54-7:2000 and EN54-5:2000
- ✓ Easy Installation



Technical Specification

Model	AW-CTD382EX		
Main Voltage	DC24V ± 3V (no polarity)		
Operating current	Monitor: 60μA	Alarm:	≤30mA
Alarm Relay Output	Normally Open and Closed		
Fix Temperature Alarm	57°C (135°F)		
Rate of Rise Alarm	7.1°C/5S		
Ex-Atex Protection Level	Gb/ExibDtDA21IP65T85		
Materials and colors	CAST IRON, ABS, White		
Mating Host	AW-CFP2166 fire alarm control panel		
Outlet Interface	G20		
Environmental	Temperature range: -10 to 50°C (14~131°F) Humidity: 5 to 95% RH, non-condensing		
Size	150mm* 150mm* 110mm		
Weight	about 1.2kg		
Bus quiescent current	≤400 μ A		
Bus quiescent current Outlet thread	2-G3/4		
Alarm confirmation light	red, flashing during inspection, always on when alarm		
Atmospheric pressure	80kPa~110kPa		