

Kobishi EMB-6

Explosion-Proof Bell

Specification :

Construction : IP54
Explosion Proof Class : ExdIIBT4
Rating : DC24V 15mA
Sound Output : 92dB/m
Conduit : G1/2
Operating Temp. Range: -20 ~ +60°C
Weight : 3 Kgs.

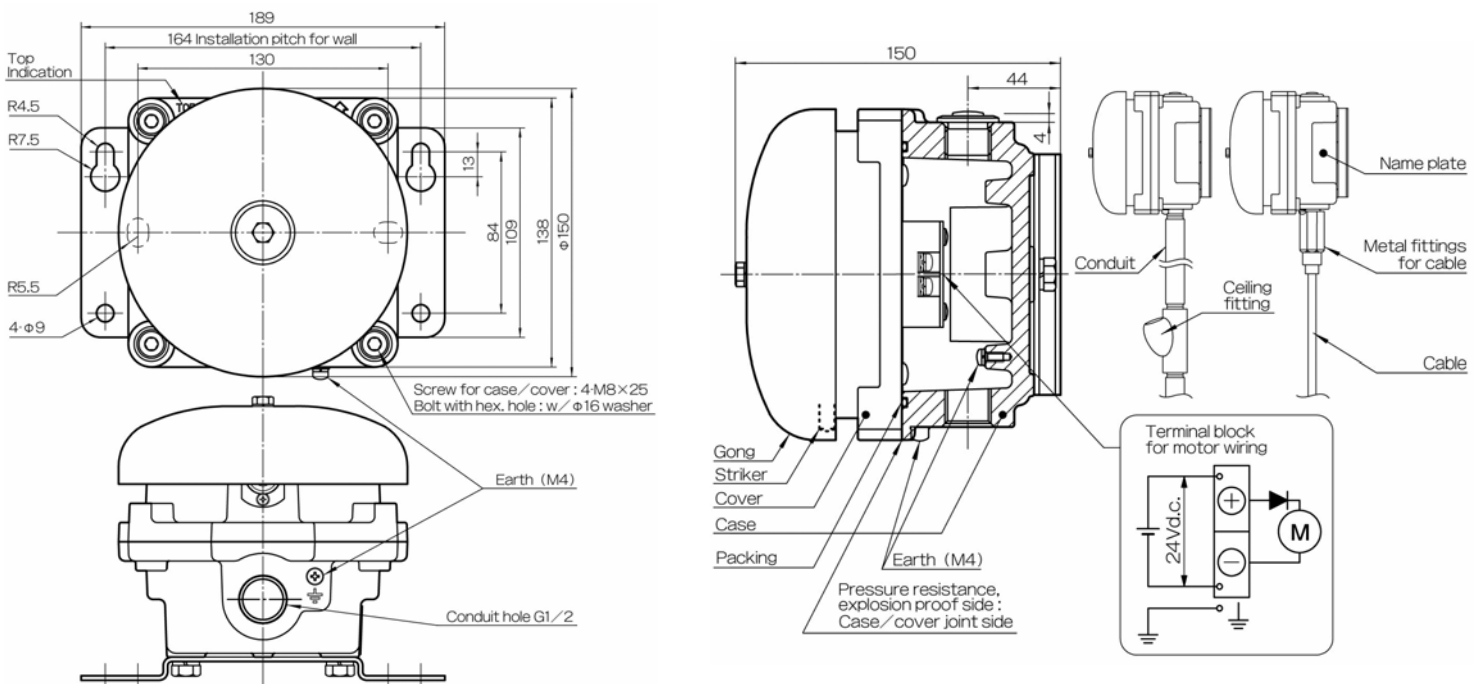
Inspected by:

- 1) Technology Institution of Industrial Safety
(Approval No. 第 C15174 号).
- 2) Fire Equipment Inspection Institute
(Approval No. 鑑認音第 13~4 号)



- * This bell is pressure resist, explosion proof construction.
- * Don't use it in the air in which ignition point being under 135°C.
- * Please ask its installation, operation, maintenance and inspection for the person who have appropriate knowledge and ability for handling each Explosion proof construction electric equipment and relative regulations.
- * Make sure to cut off the power supply during installation.
- * Don't bend, pull or stick power supply cable and lead wire forcefully.
- * Don't leave the name plate be hidden with its installation.
- * Don't touch the terminal while the measurement of the insulation resistance is being done.
- * Make sure to connect an earth wire.

Outline Drawings :



Design and Specifications are subject to change without notice